

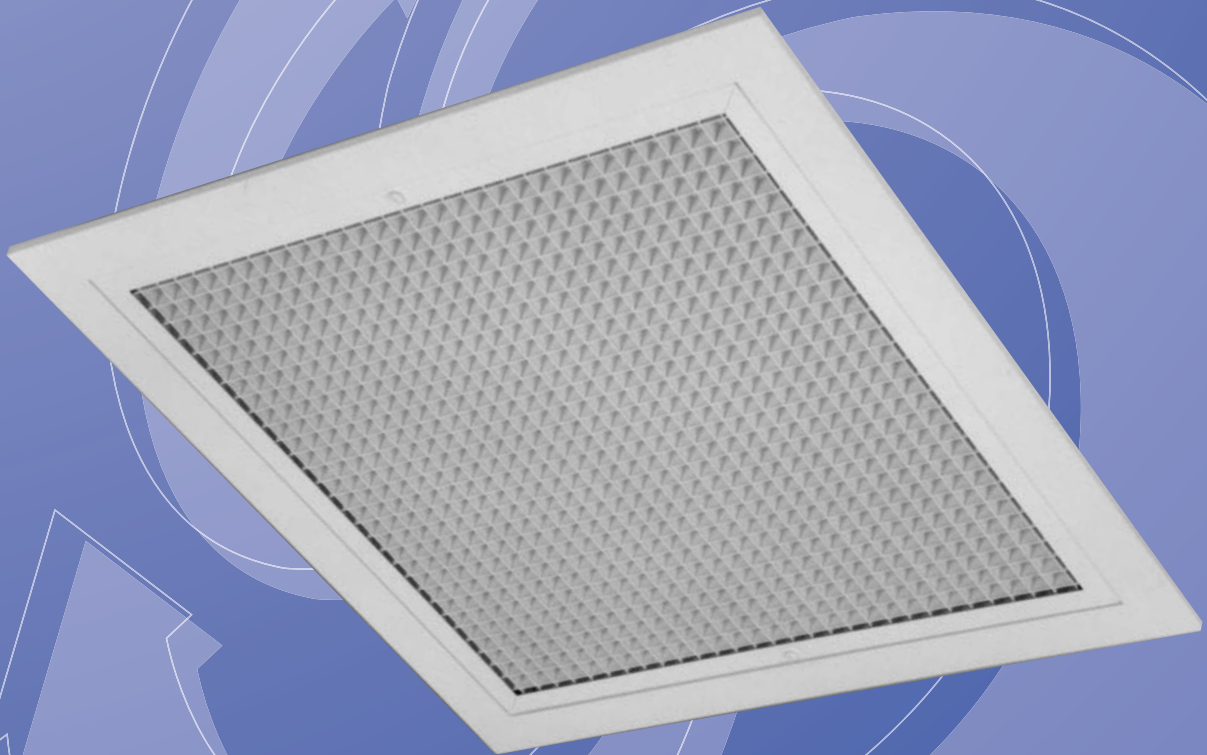
SERIES GECA-RC

Removable Core
Eggcrate Grilles

PUBLICATION

GRILLES 5

JAN 2016



Features

- Removable Eggcrate Core.
- 13mm x 13mm Eggcrate Core.
- Optional Filter Media.
- Matching Plenum Series.
- All Extruded Aluminium Construction

 **GILBERTS**

SERIES GECA-RC

Removable Core Eggcrate Grilles

Introduction

Gilberts GECA-RC Series provides an architecturally and aesthetically pleasing range of Removable Core Eggcrate Extract Grilles suitable for both ceiling and sidewall mounting applications. All units comprise of a 13mm Eggcrate central core with channel frame border which is located in a diffuser type housing frame using easy fit screw fasteners. This allows for simple core removal for cleaning, access and installation.

The GECA-RC can be supplied complete with a washable filter media which is secured between the eggcrate core and rear retaining straps. Removal of the core allows the filter media to drop out for cleaning or replacement. An alternative 'T' type border is also available for tegular type ceiling applications

Series Options:

- TYPE GECA-RC** - 13mm square Eggcrate Grille with removable core.
- TYPE GECA-RCF** - 13mm square Eggcrate with removable core complete with 12mm washable filter media.

Manufactured throughout from extruded aluminium the GECA-RC Series is available with standard accessories such as screwdriver operated opposed blade volume control dampers. Top or side entry plenum connection boxes can also be provided.

Standard finish is Polyester Powder White with other colours and finishes available on request.

Performance Data

All GECA-RC units can be sized and selected from the nomogram up to a maximum size of 1200 x 1200.

References used:

- PRESSURE:** All pressures are in Pa (N/m²).
- SOUND:** Measured in average dbA level.

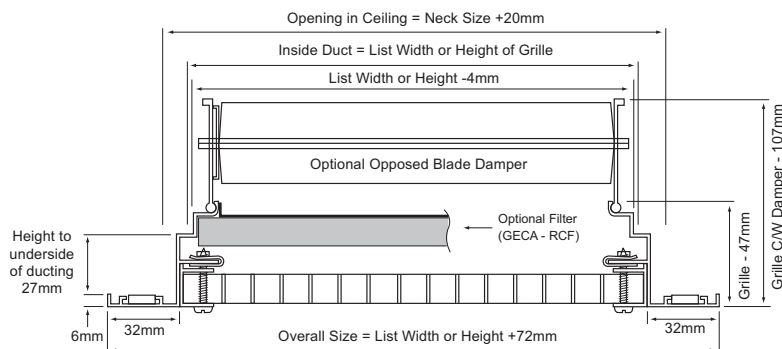
When referring to the table, determine the maximum permissible velocity relative to the volume for the application. Reference can then be made to the sizing nomogram from which the terminal size can readily be determined and additional data such as sound levels, jet velocity and pressure drops calculated.

Table of Recommended Velocities

Space Served	Sound Level db 'A' Scale	Air Volume	0.05 m ³ /s	0.25 m ³ /s	1.0 m ³ /s
Broadcasting & Recording Studios	20 - 25	Velocity m/s	2.0	1.5	1.0
Board or Conference Rooms, Churches, Concert Halls, Hospitals, Lecture Theatres, Offices, Hotels, Private Houses	30	Velocity m/s	3.0	2.5	2.0
Banks, Courtrooms, General Offices, Libraries, School Classrooms	35	Velocity m/s	3.5	3.0	2.5
Cinemas, Department Stores, Restaurants	40	Velocity m/s	4.0	3.5	3.0
Computer Rooms, Supermarkets	45	Velocity m/s	4.5	3.75	3.25
Laundries and Kitchens, Typing Pools, Pools, Sports Arenas, Light Engineering Factories,	50	Velocity m/s	5.0	4.25	3.5
Heavy Engineering Factories	60	Velocity m/s	8.0	6.5	5.0

Selection Procedure

Dimensional Data



Optional 'T' Type Border

6 to 19mm PLEASE SPECIFY

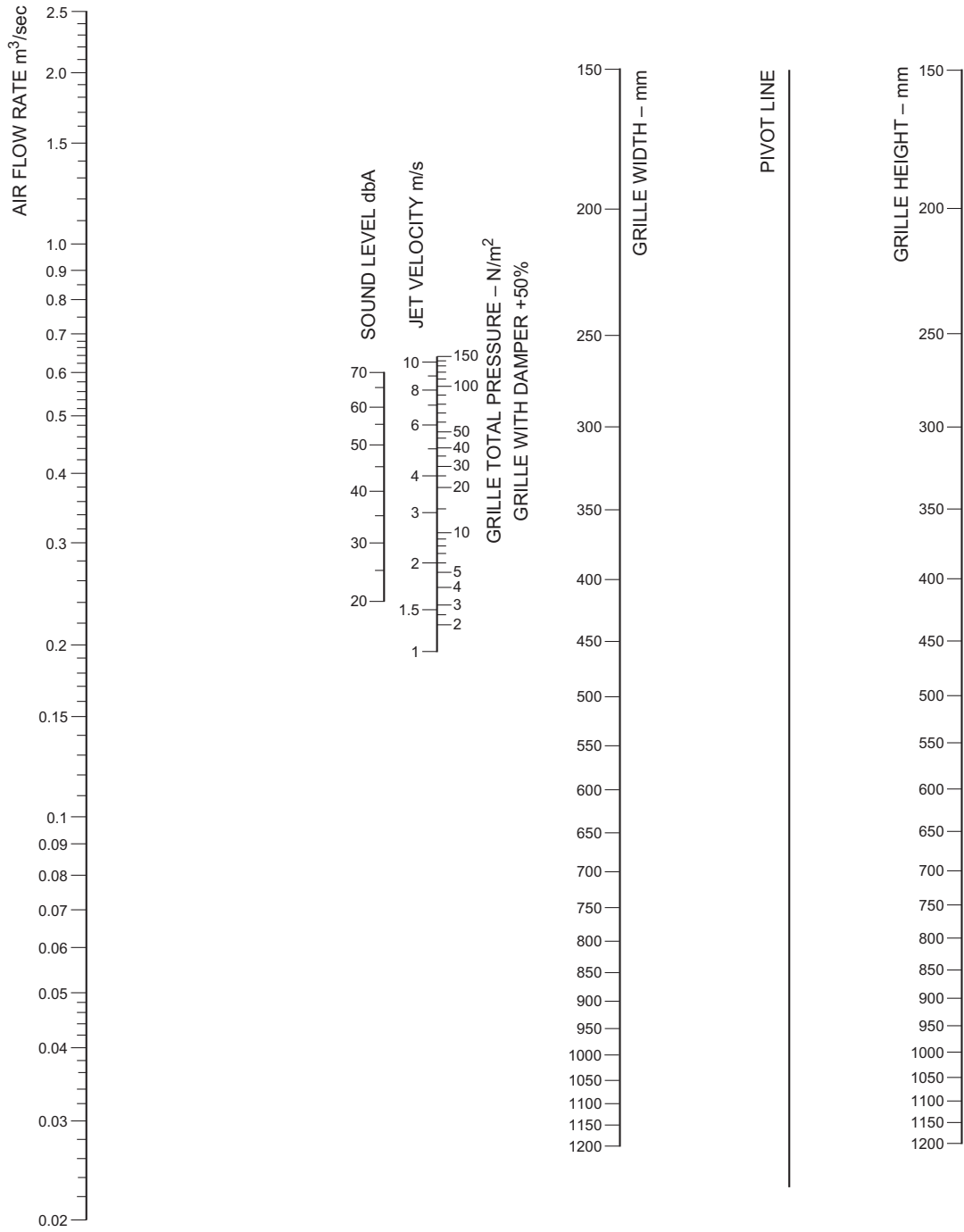
Face Size

List Size	Face Size
422.0	484.0
412.0	474.0
522.0	584.0
512.0	574.0

TYPE GECA-RC-T



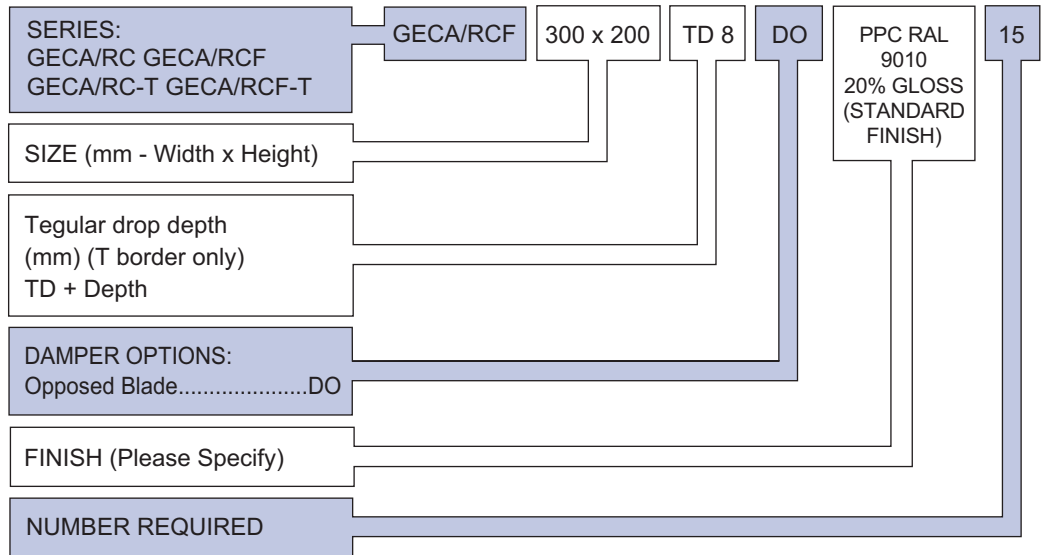
Sizing Nomogram



SERIES GECA-RC

Removable Core Eggcrate Grilles

Ordering Specification



Fixing

Grille only (solid duct connection):

Drill and rivet through grille neck.

Grille with plenum (flexible duct connection):

Standard support is via drop rods (by others) to slots on grille plenum.

Finish

Standard Finish: Polyester Powder Coat White
Ral 9010 20% Gloss

Special Finishes: Polyester Powder Finish to
stock BS or RAL Colour
(Dampers Mill Finish Aluminum)

Size Range

From 100 x 100 up to 1200 x 1200 in 1mm
increments as standard. For other sizes please
contact head office.

Options

Special fixing, border and damper options
detailed separately in grille options and
accessories data.

Plenum/Connection Boxes

A full range of purpose made matching plenum
connection boxes are available in both top and
side entry formats. For full details please refer to
the grilles options and accessories data sheet.

GILBERTS

Head Office and Works

GILBERTS (BLACKPOOL) LTD

Gilair Works, Clifton Road,
Blackpool.

Lancashire FY4 4QT.

Telephone: (01253) 766911

Fax: (01253) 767941

e-mail: sales@gilbertsblackpool.com

Web: www.gilbertsblackpool.com

